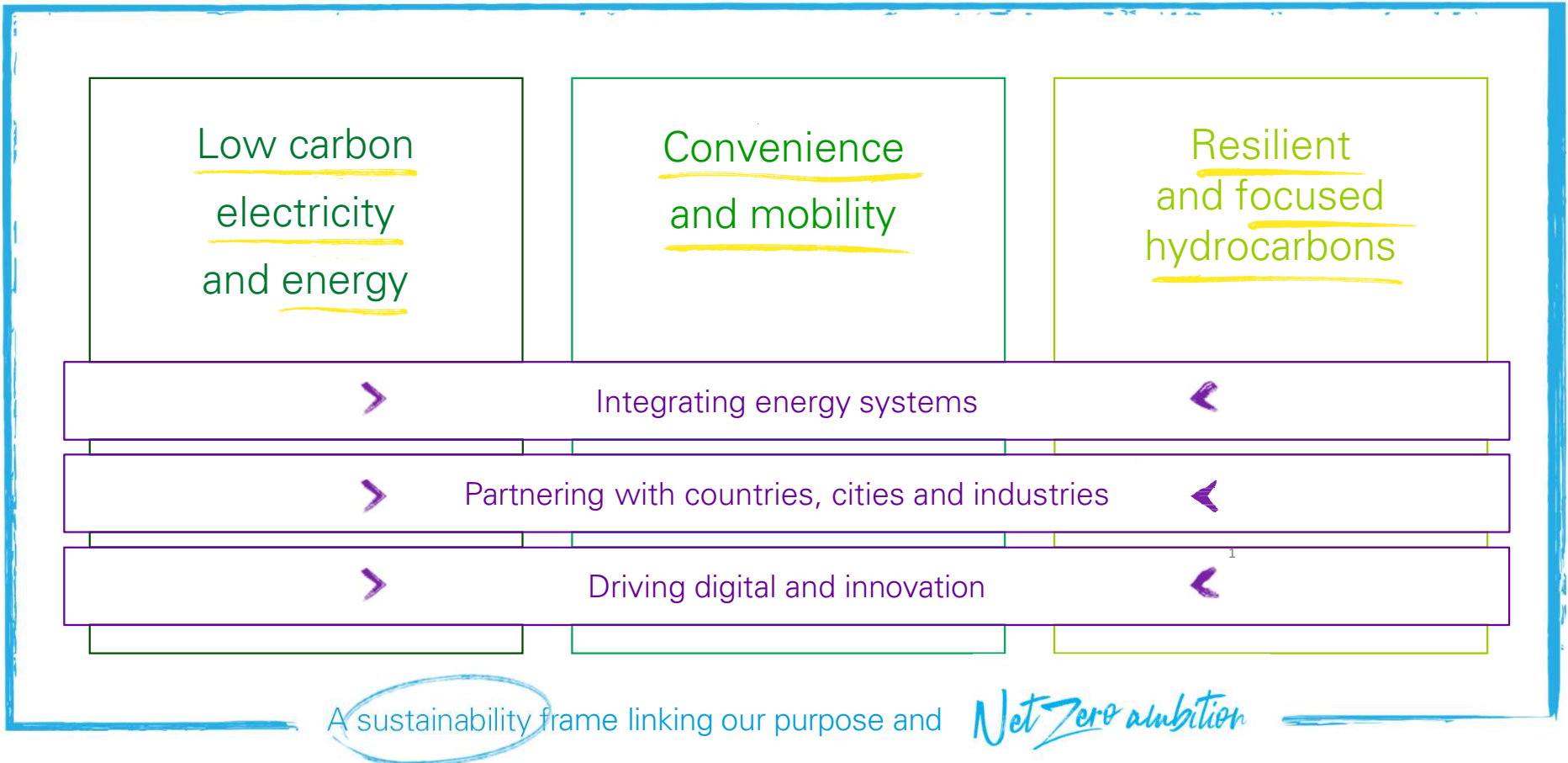
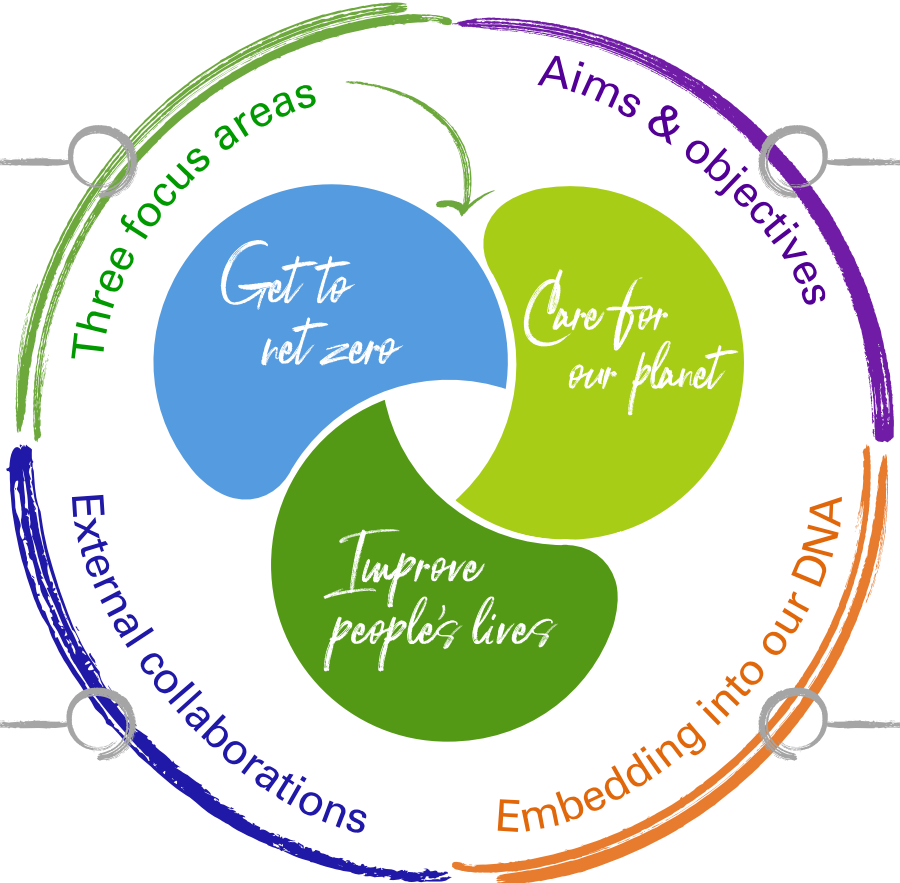


Sustainability is a critical foundation of our strategy and lies at the core of what it will take for a successful transition



Our sustainability frame

Where we can make the most difference



Transparent progress against aims aligned with our strategy

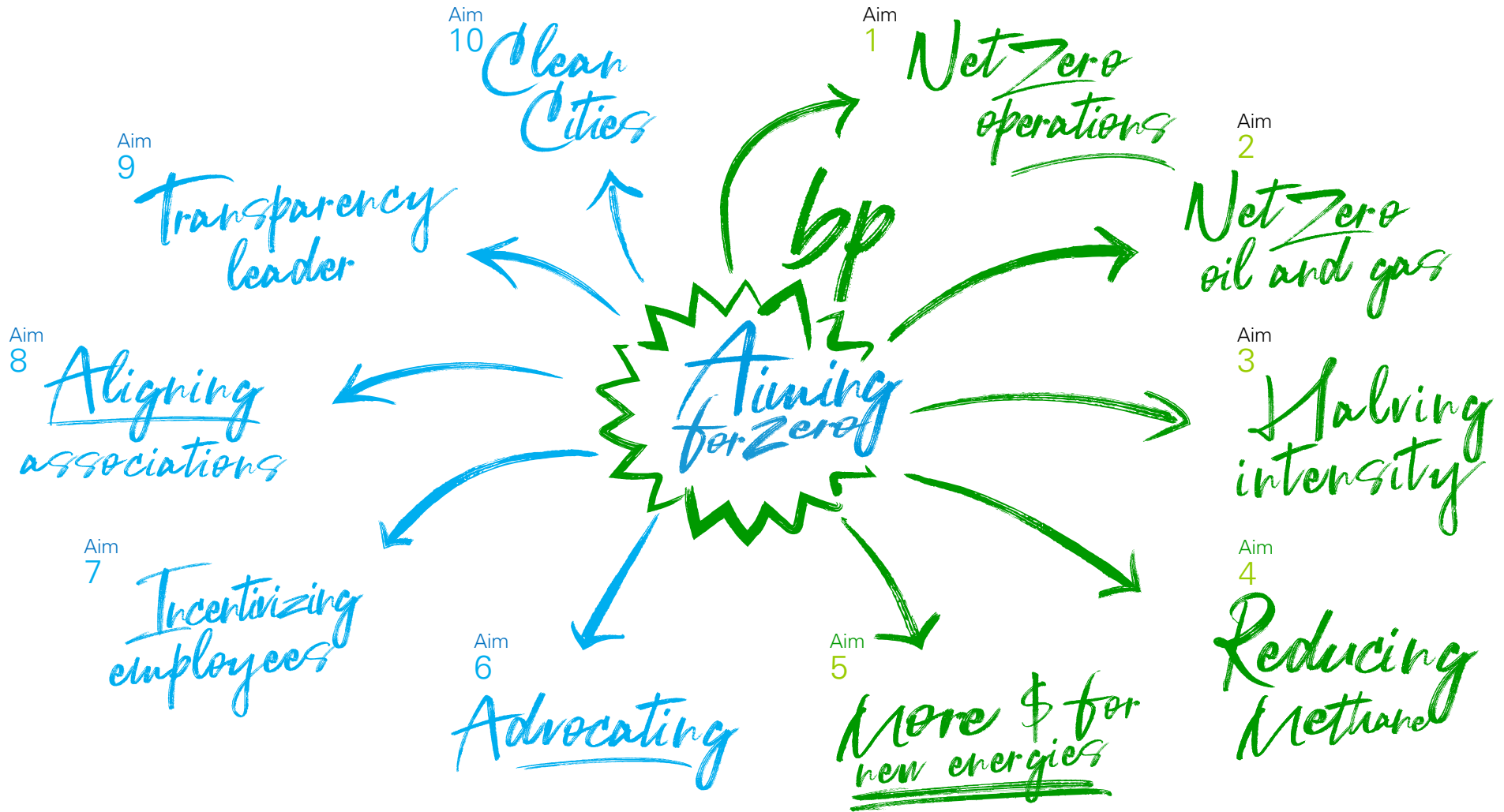
Partnerships to drive progress and shape the future together

Integration into governance and decision making

Sustainability at the heart of what we do



Get bp to net zero






Priority areas for People and Planet Focus Areas



Make a positive difference to the environment in which we operate

-  Promote cleaner environments, enhance biodiversity and promote natural climate solutions
-  Use resources responsibly
-  Promote sustainability in our supply chains and with our business partners

Support a just energy transition, promoting wellbeing for our workforce and communities where we work

-  Provide more clean energy for more people
-  Respect human rights, promote equality and sustainable livelihoods
-  Promote wellbeing, with a focus on mental and physical health